

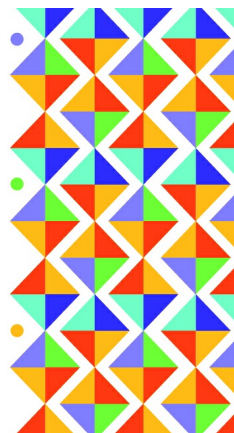


EYE ON EQUITY,
DIVERSITY AND INCLUSION



Eye on Equity, Diversity and Inclusion is designed to share relevant information and upcoming events to support our commitment to promote equity and fairness among our physicians, scientists, trainees and staff members.

Honoring Hispanic and Latino Team Members and Communities



It is National Hispanic Heritage Month and we want to celebrate and honor the history, culture, and contribution of those whose ancestors came from Mexico, the Caribbean, Central and South America, and Spain. Hispanics and Latinos lead and deliver critical components of Duke's mission, excelling in all roles and at all levels of our organization.

Rosh Hashana 2022, September 25-27



Rosh Hashanah, means the "head of the year", and is the Jewish New Year. It is a time of inner renewal and divine atonement.

It is customary to have big feasts on both nights of Rosh Hashanah and there are a plethora of customary dishes, including: honey cake, brisket, tzimmes and more Rosh Hashanah Recipes.

Suicide Prevention Month



September is national suicide prevention month. Learn more about how you can spread awareness and provide support [here](#)

QuickLinks:

- [Duke Eye Center EDI](#)
- [Moments to Movement](#)
- [Duke PAS](#)
- [Speak Up Reporting](#)
- [What our Committee is Reading & Watching](#)

Sharing positivity!

Share something special that you or colleague did at work, or service to the community using this [nomination form](#).

Upcoming Events

[View a list of Diversity and Inclusion events on the Duke Event Calendar](#)

Please email dukeeyediversity@duke.edu if you would like to suggest adding a holiday or event to our [calendar of events](#).

Duke Eye Center Statement on Racism and Discrimination

Duke Eye Center is comprised of a diverse community of physicians, scientists, trainees and staff members devoted to providing high quality care, innovative research, and first-class education. We welcome and fully engage people of diverse backgrounds, abilities, and perspectives, and strive to provide a safe and secure space for all. We strictly prohibit discrimination and do not tolerate harassment based on age, education, skin color, disability, gender, gender expression and identity, genetic information, national origin, race, religion, sex, sexual orientation, or veteran status. We are honored to serve Durham, the broader community of North Carolina, and beyond. Contact Us: DukeEyeDiversity@duke.edu

Duke Eye Center | 2351 Erwin Road, Durham, NC 27710

[Unsubscribe](#) tori.hall@duke.edu

[Update Profile](#) | [Constant Contact Data Notice](#)

Sent by dukeeyediversity@duke.edu powered by



Try email marketing for free today!