



EYE ON EQUITY,
DIVERSITY AND INCLUSION



Eye on Equity, Diversity and Inclusion is designed to share relevant information and upcoming events to support our commitment to promote equity and fairness among our physicians, scientists, trainees and staff members.

LGBTQ+ History Month



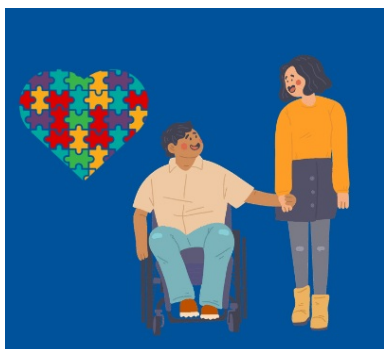
[October is LGBTQ+ History Month](#) and we want to recognize individuals who identify as part of the LGBTQ+ community. When the observance started, it was a call to action, but now it has evolved into a collaborative effort to spotlight members in the community. Duke wants every person from every background to feel supported, welcomed, and included.

Breast Cancer Awareness Month



[Breast cancer awareness month](#) is in October, which is an annual campaign to raise awareness about the impact of breast cancer. The National Breast Cancer Foundation, Inc wants to ensure every woman has access to the screenings and support she needs.

National Disability Awareness Month



[National Disability Employment Awareness](#) month is a time to recognize the crucial role individuals with disabilities, seen and unseen, play in the diverse workforce. A disability isn't always visible to others and we want to recognize every person with any disability including hearing, ambulatory, vision, self-care, cognitive, and independent living difficulties.

National Indigenous People Day



[Indigenous Peoples' Day](#) is celebrated on the second Monday of October (October 10, 2022) and it honors the culture and history of Native Americans.

Diwali



[October 24th is Diwali](#), also known as the festival of lights, which lasts 5 days with the 3rd day being the most prominent filled with key rituals. This holiday is one of the most celebrated festivals in India and is filled with joy, splendor, and brightness.

Global Diversity Awareness Month



[Global Diversity Awareness Month](#) celebrates diverse minds and beliefs all around the world by embracing the values of different cultures to better appreciate and understand the world.

If you would like an opportunity to participate in discussions related to Equity, Diversity, and Inclusion, click [here](#). "National Chats for Change" is a monthly webinar designed to facilitate important discussions around EDI on a national level and is provided through Icahn School of Medicine at Mount Sinai. It's available to anyone interested and generally meets from 12:00-1:00pm EST.

QuickLinks:

- [Duke Eye Center EDI](#)
- [Moments to Movement](#)
- [Duke PAS](#)
- [Speak Up Reporting](#)
- [What our Committee is Reading & Watching](#)

Sharing positivity!

Share something special that you or colleague did at work, or service to the community using this [nomination form](#).

Upcoming Events

[View a list of Diversity and Inclusion events on the Duke Event Calendar](#)

Please email dukeeyediversity@duke.edu if you would like to suggest adding a holiday or event to our [calendar of events](#).

Duke Eye Center Statement on Racism and Discrimination

Duke Eye Center is comprised of a diverse community of physicians, scientists, trainees and staff members devoted to providing high quality care, innovative research, and first-class education. We welcome and fully engage people of diverse backgrounds, abilities, and perspectives, and strive to provide a safe and secure space for all. We strictly prohibit discrimination and do not tolerate harassment based on age, education, skin color, disability, gender, gender expression and identity, genetic information, national origin, race, religion, sex, sexual orientation, or veteran status. We are honored to serve Durham, the broader community of North Carolina, and beyond. Contact Us: DukeEyeDiversity@duke.edu

Duke Eye Center | 2351 Erwin Road, Durham, NC 27710

[Unsubscribe tori.hall@duke.edu](mailto:tori.hall@duke.edu)

[Update Profile](#) | [Constant Contact Data Notice](#)

Sent by dukeeyediversity@duke.edu powered by



Try email marketing for free today!